

ROLLOVER

THE ART OF LAMINATING

ROLLOVER

THE ART OF LAMINATING

ROLLOVER AS - The company was established in the late 1960s in the blacksmith market and expanded with sign-making in the late 80s.

Following many years of close monitoring of the sign-making industry, the need for a flatbed laminator with better properties triggered the Rollover concept.

After intense product development and testing, the Rollover Flatbed Applicator was launched in the European market in 2011. The responses and feedback from users were overwhelmingly positive and led to a rapidly growing sale through an expanding network of distributors. Rollover was introduced in the USA in 2013 and today Rollover AS has sold to more than 60 countries worldwide.

The headquarters is in the small town of Mysen, Norway, where production, order registration, logistics, and technical support are handled.

Warehouse locations are in Norway, Brisbane, Australia, and New Jersey, USA to enable short lead times.

The Rollover team comprises a small very dedicated group of people who take pride in the high level of craftsmanship, value the loyalty of customer relations worldwide and always strive to provide excellent customer service.

Rollover - Designed & Engineered in Norway

ROLLOVER FLATBED APPLICATOR

The Rollover Flatbed Applicator improves the way of solving the daily challenges of the sign making industry. It ensures a **perfect result in a minimum of time** regardless of media type such as self-adhesive vinyl applications, road signs, glass application, banners etc.

It is **user-friendly**, smooth and efficient to operate with **one hand/one button** only whilst having free access to the roller, media and tabletop and provides **optimal ergonomic work positions**. It arrives in **one piece** with very little preparation needed and can eliminate the need for an extra workstation.

BENEFITS:

- **Unique design - no gliding beam above the roller.**
 - Gives **unobstructed access** to the glass bed/media while working
 - No standing tower when the roller is down (moves with the roller)
 - Can be equally used from both sides
- **5-year standard warranty.**
- **Allows relocation and is always fitted with casters for mobility.**
- **No levelling required.**
- **Height adjustable legs** optional.
- **Single piece float glass/no split glass** which gives better results working with full lamination and demanding foils.
- **The air tube is secured** from damage.
- Operates **up to 87mm /3.4in** in thickness.
- Features **LED illuminated glass tabletop** and **self-healing cutting mat**.
- Comes in an **extensive range** to suit the needs of most sign makers and the handling of oversized media.
- **High level of craftsmanship and solid construction.**

ROLLOVER

CLASSIC



ROUNDED HOUSINGS

No sharp edges and protected activation switch provide superb and unobstructed access to the work surface.

EASY ONE-HAND OPERATION

By using the ergonomically shaped and inward-facing handles, the roller can be moved easily over the tabletop both in a raised and lowered position.

ILLUMINATED (LED) GLASS BED

The work surface can be back lit to improve accuracy in operation, cutting etc.

HANDY TOOL POCKETS

Store your tools in these conveniently placed pockets on each housing.

LARGE SIDE TRAYS

For storage and handling of oversize media across the table top.

SPINDLE & BRACKET HOLDERS

Easy storage when not in use.

CASTORS

To enable easy relocation and transport of the machine.

SELF-HEALING CUTTING MAT

Transparent 5mm PVC (Phtalate-free) cutting mat. Improves accuracy when cutting and control in operation.

ATTACHMENT POINTS

For brackets & spindles holding media and application tape. Also found at the roller housings.

ROLLOVER CLASSIC

AREAS OF USE



RIGID PANEL APPLICATION / LAMINATING DIGITAL PRINTS

Rollover reveals its excellent properties in result and operation when applying digital prints and other self-adhesive applications on rigid panels. Substrates up to 87mm / 3.4 in in thickness.



APPLICATION / TRANSFERTAPE

Use of application tape is easily done by using the extra media holders.
Full use of the table top can be utilised.
User-friendly operation with one hand and only one button.

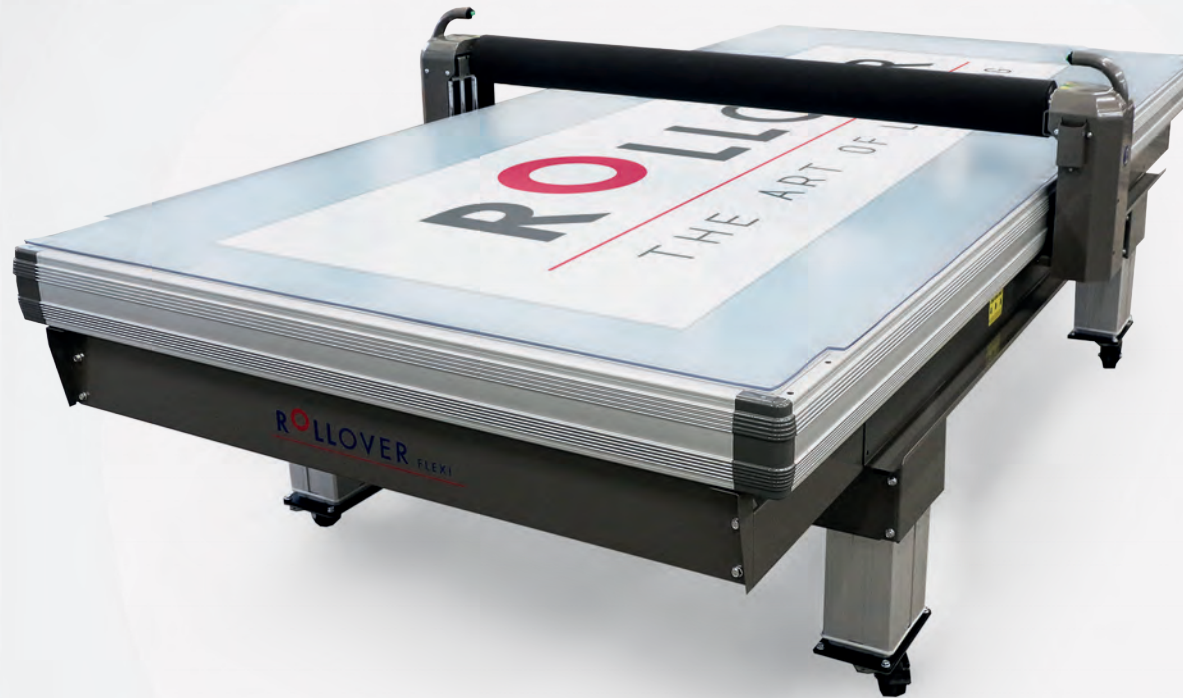
THE ROLLOVER AS WORK STATION

With Illuminated (LED) glass bed and self-healing cutting mat the Rollover eliminates the need for a separate workstation.



ROLLOVER

FLEXI



Rollover Flexi is the flexible addition to the Rollover range. This unit offers quick dismantling to facilitate entering premises with difficult access.

The Rollover Flexi represents a high level of quality, solid construction and durability.

Having no overhead gantry above the roller, the access to media and substrates while working is superior.

The Flexi Model arrives fully assembled but is constructed for convenient and easy dismantling in 3 main sections:

- The sliding arms/roller gantry
- The glass bed and supporting frame
- The leg sections

The elements can be individually transported either manually or by using the specially developed transport tool.



TESTIMONIALS

"The Rollover Flexi Application Table has several features that make me wonder how I ever managed sign production without it. For years, I've used production tables that forced me to bend over excessively (being taller), which strained my back. The Rollover Table allows me to adjust the height to suit not only myself but my entire team. Most importantly, I truly value its ability to consistently apply overlamine and vinyl, free of bubbles, ensuring a reliable finish every time."

~Patrick Finn - Manager, Production Training, FASTSIGNS International, Inc. - purchased from Grimco USA

"I purchased the flexi because I work by myself and always found it difficult to do larger jobs without paying someone to help me. Now I do them on my own, deliver a better finish sign and faster. Yes - the Rollover is paying for itself."

~ David Stickers & Signs, Noosaville QLD, Australia - purchased from Wilenco Australia.



"The Rollover flatbed applicator is an absolute game changer for our business. It functions like an extra set of hands, enabling a one-man operation with ease. The bubble-free lamination is impeccable, ensuring our finished products are of the highest quality. Not only has it significantly improved our production time, but the time saved translates to cost savings for the end user. We couldn't be more impressed with its performance and efficiency"

~ Taylor Sellinger, Premier Graphics Inc, Vancouver - purchased from ND Graphics Canada.

"The Rollover Flexi has been a fantastic addition to our production workflow. Its pneumatic controls make adjusting the roller a breeze, giving me excellent control during applications. I also appreciate the table's extensive adjustability—rising high and lowering significantly—ensuring a comfortable working position for any task. The built-in LED lights are incredibly useful, particularly when working with backlit graphics and for layering. This table has undoubtedly streamlined our workflow and boosted efficiency!

Vinyl, free of bubbles, ensuring a reliable finish every time."

~Tyler Crum - Manager of Tech Services, FASTSIGNS International, Inc. - purchased from Grimco USA



"Since we introduced the Rollover Laminator in our production, the efficiency have improved drastically. We are indeed pleased with our Rollover, and have not experienced problems of any kind. The level of quality on the machine itself and the various applications made has met and even exceeded our expectations. I am happy to recommend the Rollover to anyone working in the Graphic Arts Industry"

~ Tommy Evensen, General Manager - Kursiv Skilt & Dekor AS, Norway



"Now we know we did the right choice when we decided to purchase your machine. We're very pleased with your machine and your aftersales service. It's very important for us to know we are working with a trustworthy company like yours."

~ Manuel Fernández Rubio - Dpto. Imagen Digital, Tenerife Spain

KEY FIGURES

CLASSIC

ROLLOVER CLASSIC MODELS	C3317	C4017	C5317	C6017	C6717	C8017
Glass bed working area in cm/feet:	336 x 170cm / 11' x 5' 7"	400 x 170cm / 13' 1" x 5' 7"	536 x 170cm / 17' 7" x 5' 7"	600 x 170cm / 19' 8" x 5' 7"	672 x 170cm / 22' 1" x 5' 7"	800 x 170cm / 26' 3" x 5' 7"
Working area of roller in cm/feet:	306 x 170cm / 10' x 5' 7"	370 x 170cm / 12' 1" x 5' 7"	506 x 170cm / 16' 7" x 5' 7"	570 x 170cm / 18' 8" x 5' 7"	642 x 170cm / 20' 1" x 5' 7"	770 x 170cm / 25' 3" x 5' 7"
Roller diameter in cm/inch:	13cm / 5.1 in	13cm / 5.1 in	13cm / 5.1 in	13cm / 5.1 in	13cm / 5.1 in	13cm / 5.1 in
Approx. weight in kg/lbs:	530 / 1169	650 / 1433	845 / 1863	1010 / 2227	990 / 2183	1230 / 2712
Illumination, LED	175W	210W	290W	325W	350W	420W
Steel edge outside glassbed	Add 30mm / 1,2" on each side	Add 30mm / 1,2" on each side	Add 30mm / 1,2" on each side	Add 30mm / 1,2" on each side	Add 30mm / 1,2" on each side	Add 30mm/1,2" on each side
Max. thickness of sign substrate	87mm / 3.4"	87mm / 3.4"	87mm / 3.4"	87mm / 3.4"	87mm / 3.4"	87mm / 3.4"
Work height of glass bed:	900mm / 35.4"	900mm / 35.4"	900mm / 35.4"	900mm / 35.4"	900mm / 35.4"	900mm / 35.4"
Power supply	230V/50Hz/24V – 120V/60Hz/24V	230V/50Hz/24V – 120V/60Hz/24V	230V/50Hz/24V – 120V/60Hz/24V	230V/50Hz/24V – 120V/60Hz/24V	230V/50Hz/24V – 120V/60Hz/24V	230V/50Hz/24V – 120V/60Hz/24V
Side trays for oversize media handling	✓	✓	✓	✓	✓	✓

APPLICABLE TO BOTH MODELS

Inward facing & protected activation switch
Ergonomic handles for roller operation
Rounded housings – no sharp edges
Free view to roller
Unobstructed access to the roller
Reversible extra brackets for application tape
Self-healing cutting mat
LED-illuminated glass bed
Casters
Side shelves for storing (F1510 excluded)

OPTIONAL FEATURES UPON REQUEST Factory Installed only

HEAT ASSISTED ROLLER
30°C/86°F – 65°C/149°F

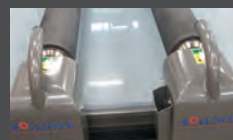
HEIGHT ADJUSTABLE LEGS
Electrically driven 80cm/31,5" –
110cm/43,3"

EXTENDED GAP
Extended gap between roller and glass bed

LONGSIDE CUTTER
GUIDE
Makes straight cutting
of media and substrates
much easier



TWIN ROLLERS
*classic only



FLEXI

ROLLOVER FLEXI MODELS	F1510	F2814	F3315
Glass bed working area in cm/feet:	152 x 106cm / 5' x 3' 6"	286 x 140cm / 9' 5" x 4' 7"	336 x 155cm / 11' x 5' 1"
Working area of roller in cm/feet:	131 x 106cm / 4' 4" x 3' 6"	256 x 140cm / 8' 5" x 4' 7"	306 x 155cm / 10' x 5' 1"
Roller diameter in cm/inch:	11,5 cm / 4.5 in	13cm / 5.1 in	13cm / 5.1 in
Approx. weight in kg/lbs:	165 / 363	390 / 858	450 / 990
Illumination, LED	45W	127W	175W
Max. thickness of sign substrate:	63mm / 2.48 in	78mm / 3.07 in	78mm / 3.07 in
Work height of glass bed:	900mm / 35.4 in	900mm / 35.4 in	900mm / 35.4 in
Power supply	230V/50Hz/24V – 120V/60Hz/24V	230V/50Hz/24V – 120V/60Hz/24V	230V/50Hz/24V – 120V/60Hz/24V
Detachable	✓	✓	✓

For more information:
www.rollover.no

ROLLOVER

ACCESSORIES



CORE ADAPTORS

Item no: 10920

- Set of 2 pieces to attach media rolls to the spindle.
- Fits standard inside diameter of 75mm/2.9in.



ROLLOVER STORAGE TROLLEY

Item no: 10936

- Integrated storage trolley for media rolls, panels and tools underneath the table.
- Fitted with casters to provide easy access.



ROLLOVER LONG REACH CUTTER

Item no: 10910

- Tool to cut media across the table without having to lean over the table.
- Spare blades 10pcs/pack available - item no: 10911.



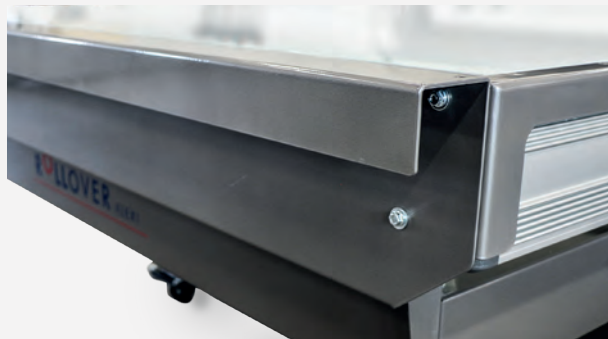
CONTACT CLEANER

Item no: 10918

- Cleans any flat surface.
- Ergonomic design of the handle.
- Extendable shaft included.

ROLLOVER

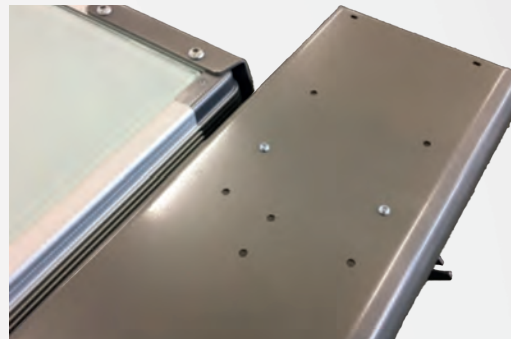
ACCESSORIES



SUPPORT SHELF FOR VINYL REMOVER VR15

Item no: 10121 – Classic Models
10122 – Flexi 3315
10119 – Flexi 2814

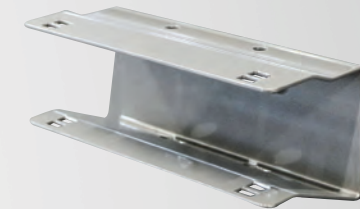
- Specially developed brackets for easy mounting of the Vinyl Remover VR15.



SUPPORT SHELF FOR KEENCUT EV03

Item no: 10123 – Classic Models
10124 – Flexi Models

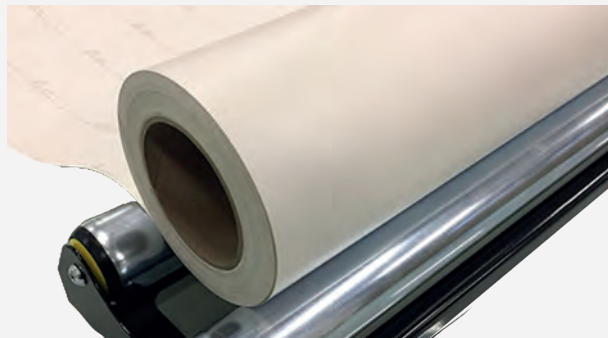
- Specially developed support shelf allows easy mounting of the EVO3 Cutter to any Rollover model.



SPINDLE & BRACKET HOLDERS (Classic)

Item no: 10156

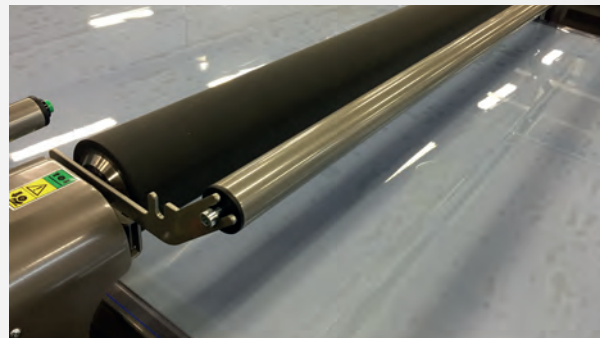
- Additional media holder for easy storage when not in use.



ROLLOVER ROLL CRADLE

Item no: 10130

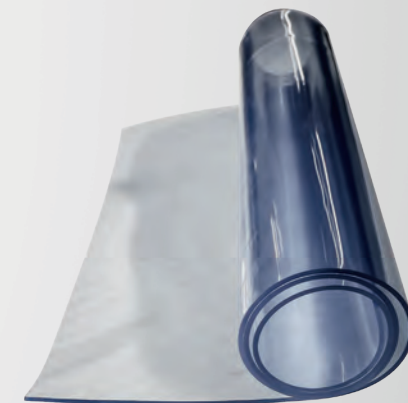
- 25 cm / 9' 10" - set of 2.
- Designed to carry and feed from media rolls.
- Flat base for stable placing on the table top.



ADDITIONAL MEDIA HOLDER

Item no: 10130

- Facilitates media handling
- Fits both table ends as well as the roller housings.



SELF-HEALING CUTTING MAT

- Available in any model size as well as customized.
- Non-phthalate – contains no harmful substances.
- Improves accuracy when cutting.

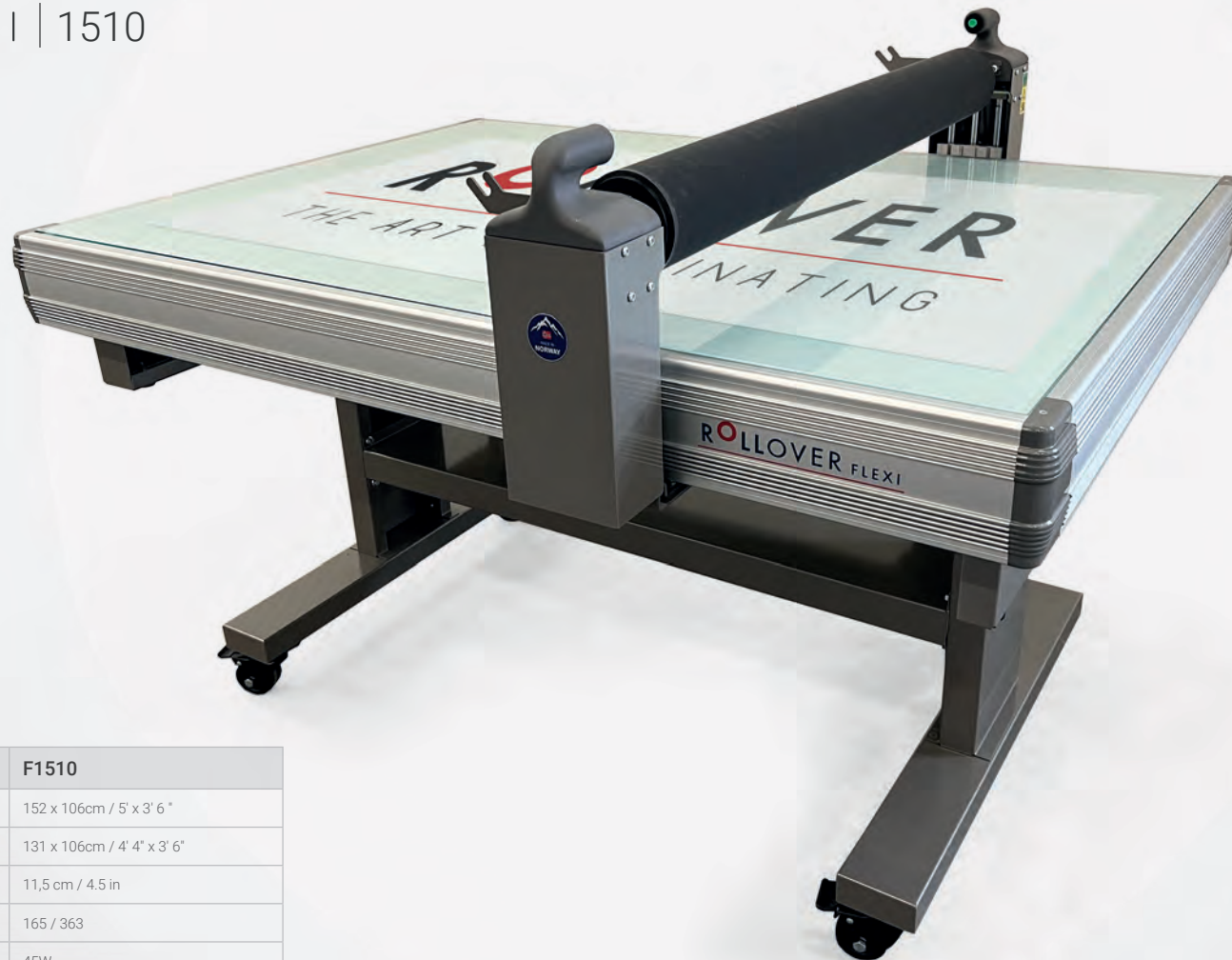


SIGNATURE

5
YEAR
WARRANTY

ROLLOVER

FLEXI | 1510



ROLLOVER FLEXI MODELS	F1510
Glass bed working area in cm/feet:	152 x 106cm / 5' x 3' 6"
Working area of roller in cm/feet:	131 x 106cm / 4' 4" x 3' 6"
Roller diameter in cm/inch:	11,5 cm / 4.5 in
Approx. weight in kg/lbs:	165 / 363
Illumination, LED	45W
Max. thickness of sign substrate:	63mm / 2.48 in
Work height of glass bed:	900mm / 35.4 in
Power supply	230V/50Hz/24V - 120V/60Hz/24V
Detachable	✓

