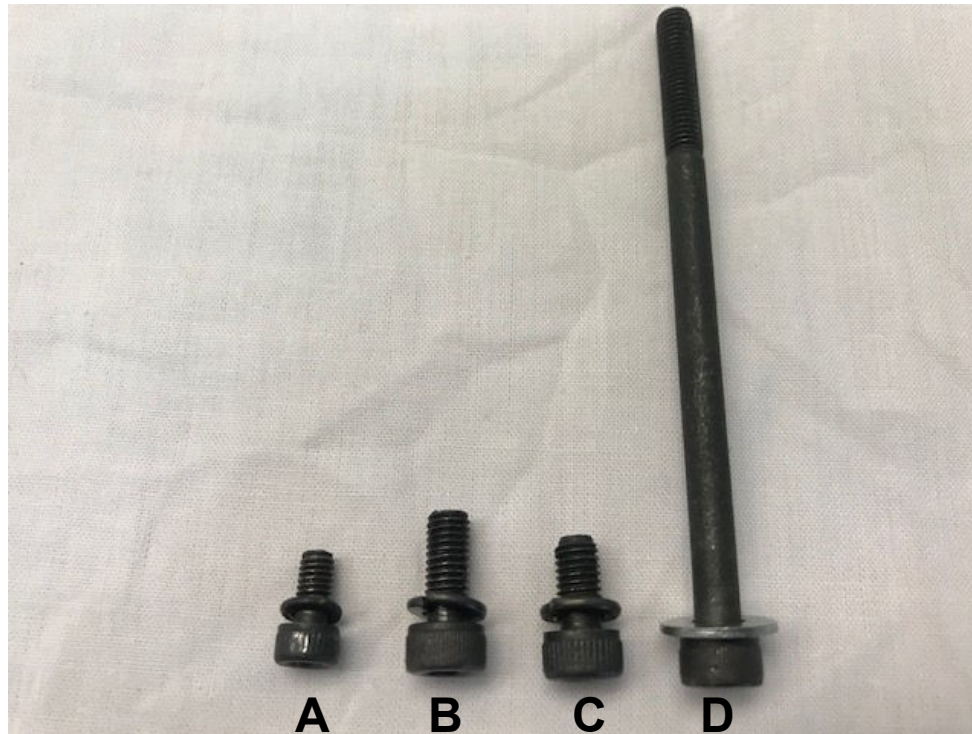
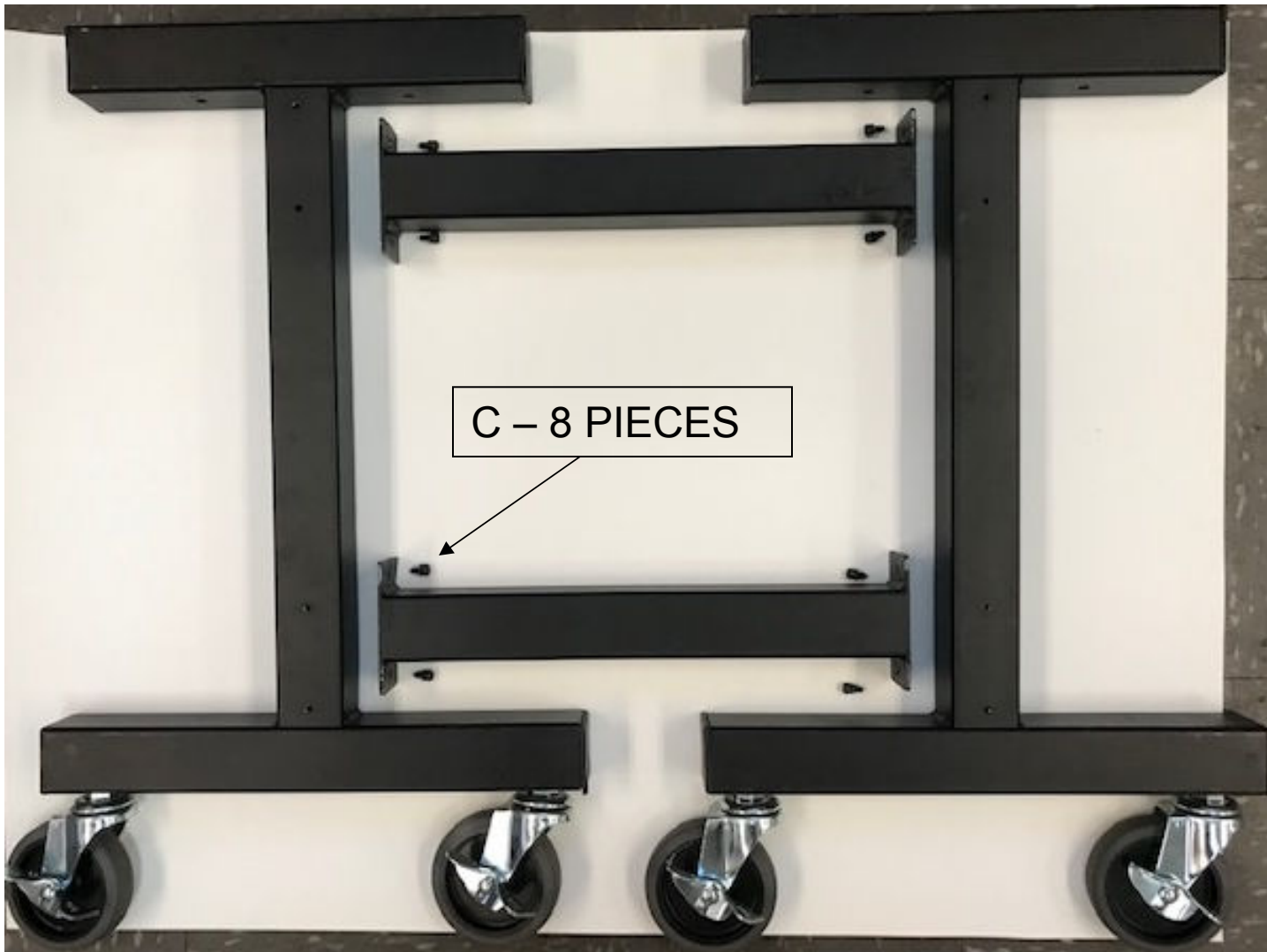


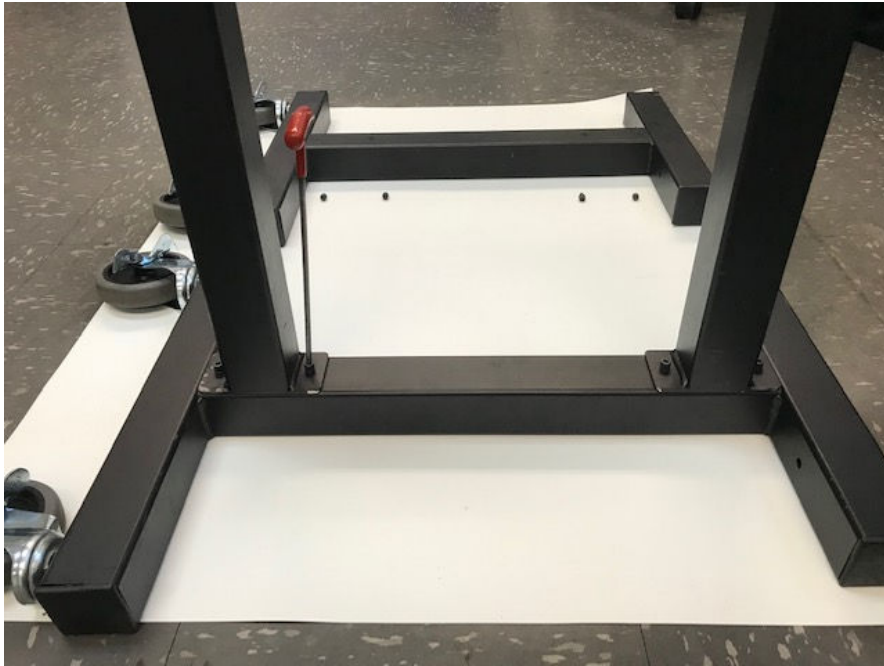
TCC-1400F+ ASSEMBLY



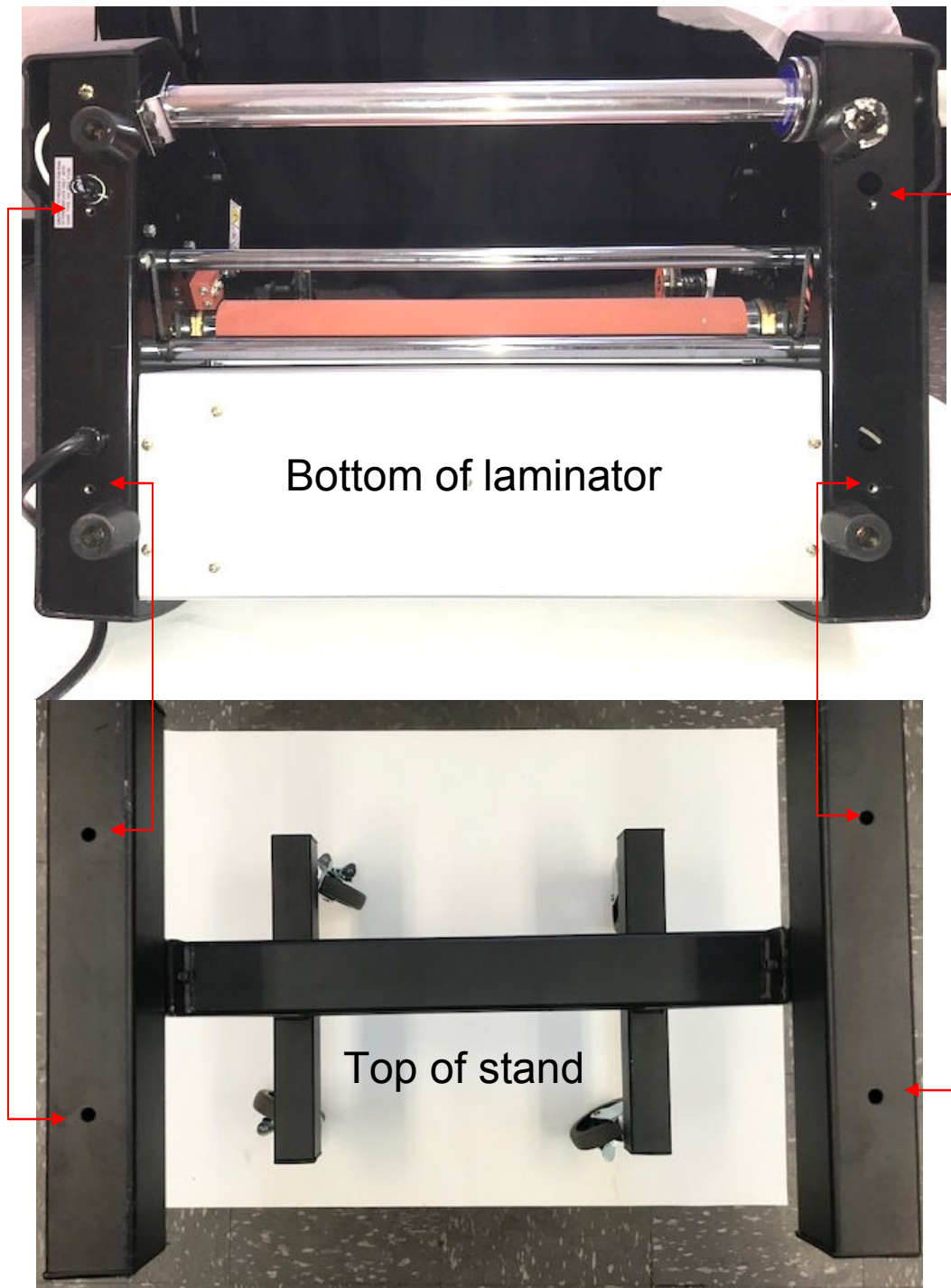
- A – 6 pieces (Attaches left & right bracket to the laminator)
- B – 2 pieces (Attaches idling bar to the left and right bracket)
- C – 8 pieces (Stand assembly)
- D – 4 pieces (Attaches stand to the laminator)



Attached the 2 horizontal brackets to the left & right legs of the stand.

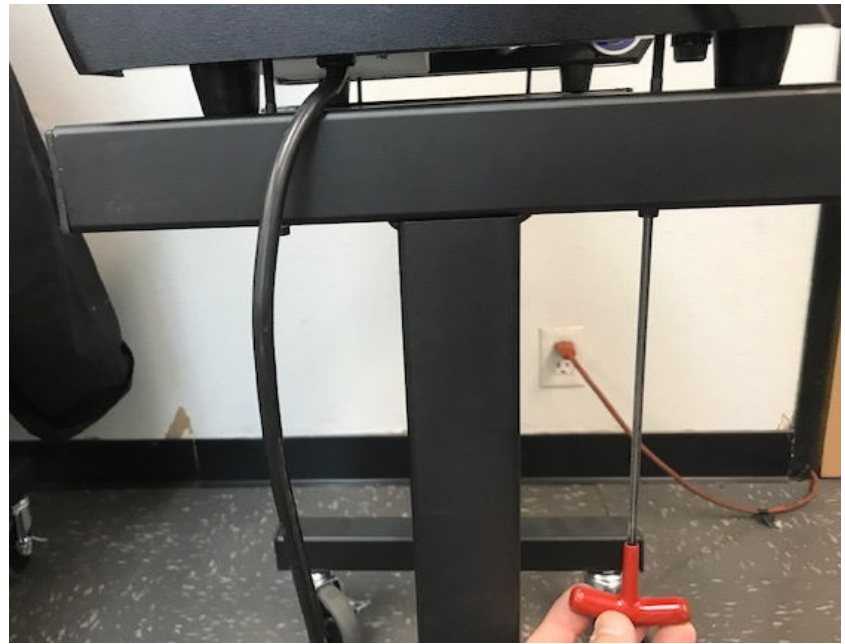
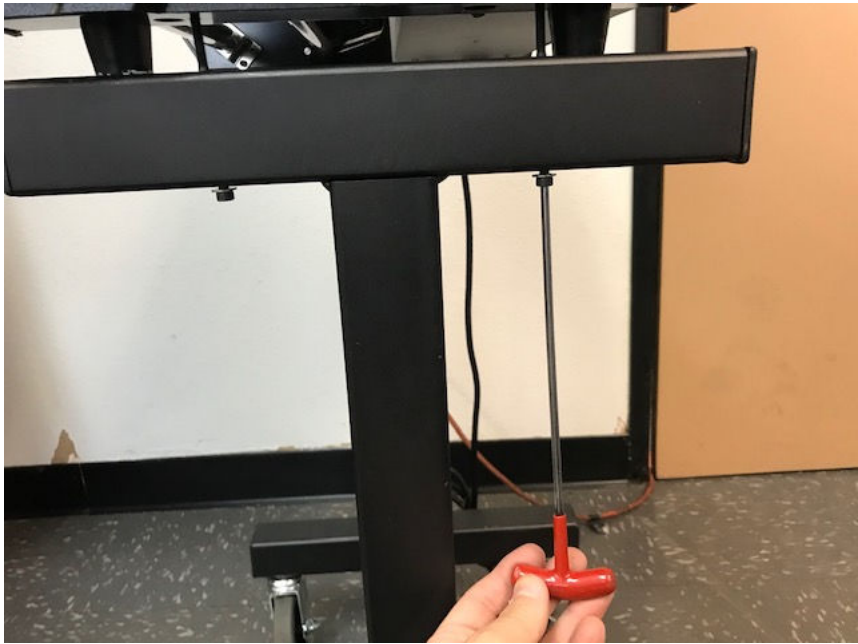


1. Attach the horizontal brackets to the right leg first but don't fully tighten the screws.
2. Attach the horizontal brackets to the left leg.
3. Tighten all screws.

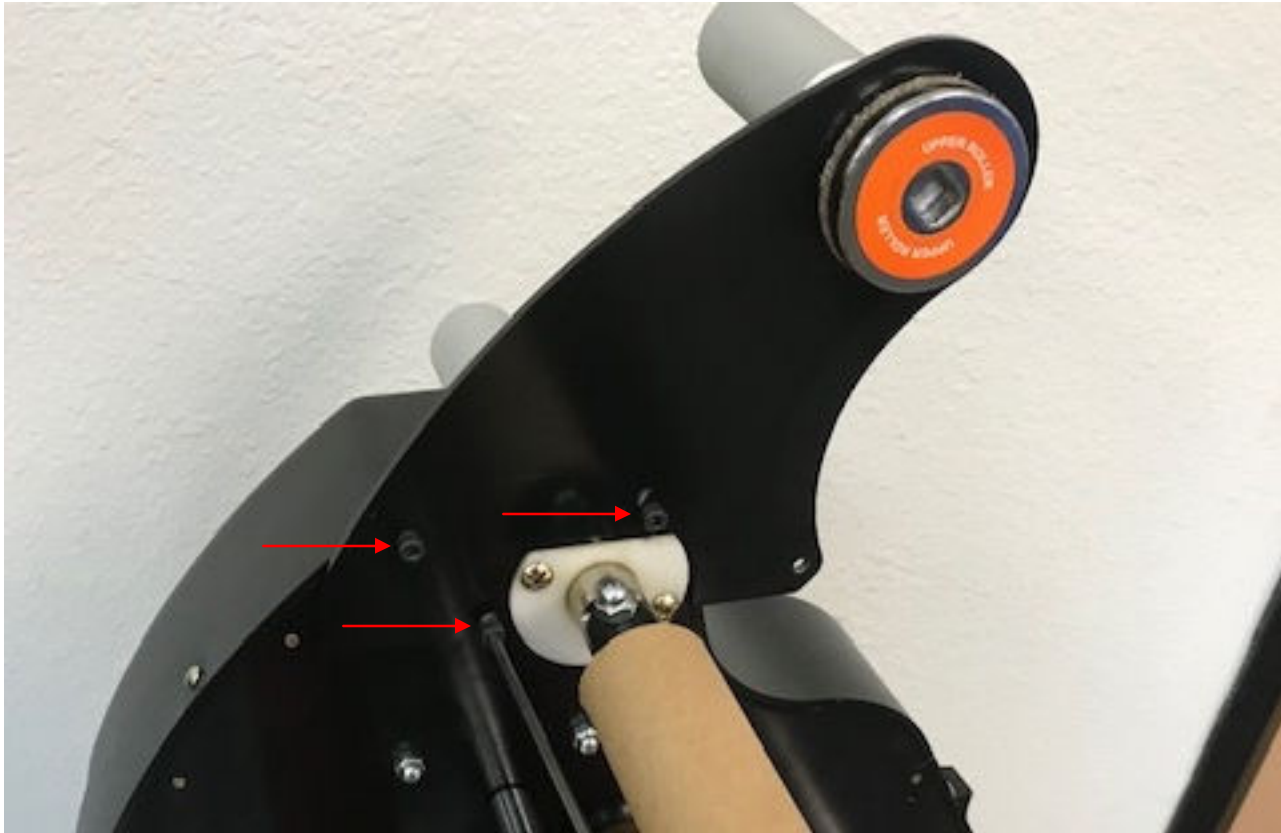


Screw "D"

1. Put the laminator on top of the stand.
2. Lightly attached all 4 screws first before tightening.



Attach the right side then the left side before tightening all screws.



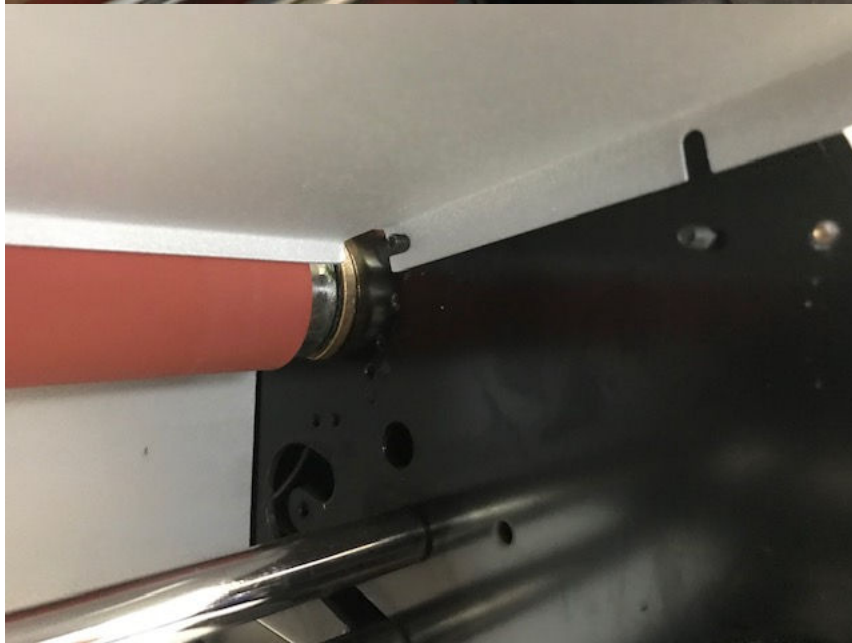
Attach the right bracket to the right side of the laminator using screw “A”.



Attach the left bracket to the left side of the laminator using screw “A”.



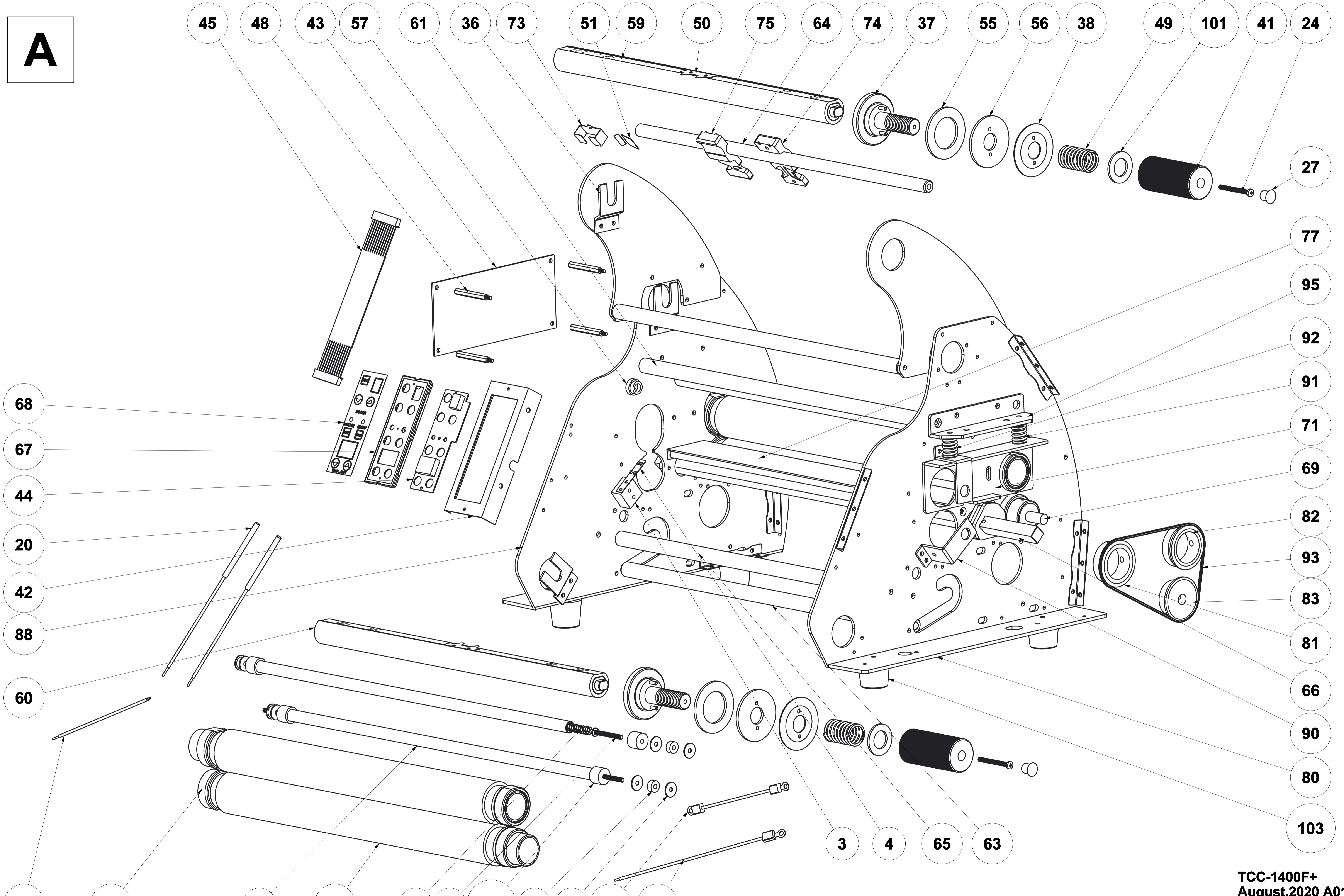
Attach the idling bar to the left and right bracket using screw “B”.



TCC-1400F+ PART MANUAL

NO.	PART NO.	DESCRIPTION	NO.	PART NO.	DESCRIPTION
1	15C-M	HEAT SINK (ALUMINUM)	53	RLM-50	FUSE SET
2	3H1-BP9-A	ISOLATION_PAD	54	RLM-53-SR	WIRE JACKET
3	3H1-D30	THERMO	55	RLM-54	PAD
4	3H1-D33	TEMPERATURE_SENSOR_WITH_WIRE	56	RLM-55	PAD
5	3H1-P11	BAKELITE SHEET	57	RLM-60	FIXED POLE
6	3H1-P8-2S-110-400	HEATER	58	RLM-62	TRANSFORMER
7	3H1-P8-3B	FIXED_SCREW	59	RLM-14L	TOP ROD
8	3H1-P8-V	QUARTZ_TUBE	60	RLM-14L-1	BOTTOM ROD
9	CB-3	GUIDE_SCREW	61	RLM-15S	EXPAND SHAFT Ø5
10	D209-EP-31	POWER_WIRE	62	RLM-15S	EXPAND SHAFT Ø5 (REVISE)
11	D266-D-1	LIMIT_SWITCH	63	RLM-15S-2	EXPAND SHAFT (MOVABLE)
12	D266-H-1	WIRE (MOTOR SWITCH TO MOTOR RED)	64	RLM-16L	FIXED SHAFT (REVISE)
13	D266-I-1	WIRE (MOTOR SWITCH TO MOTOR BLACK/LIMIT SWITCH)	65	RLM-16S-1	FIXED SHAFT
14	D266-K	WIRE (POWER SWITCH TO WIRE P AND POWER CORD WHITE)	66	RLM-17S	ADJUSTMENT SHAFT
15	D266-L	WIRE (POWER SWITCH TO PCB)	67	RLM-27T	CONTROL PANEL
16	D266-M	WIRE (POWER SWITCH TO FUSE SET)	68	RLM-28T	BUTTON NAMEPLATE
17	D266-N	WIRE (UPPER & LOWER HEATER)	69	RLM-2HC-2	BUSH_SPROCKET_1400F
18	D266-O-1	WIRE (HEATER TO PCB)	70	RLM-2T	TOP/ BOTTOM ROLLER
19	D266-P	WIRE (WIRE K AND POWER CORD WHITE TO PCB)	71	RLM-2T	TOP/ BOTTOM ROLLER
20	D266-Q	CUT-OFF FUSE	72	RLM-33A	SIDE GUIDE (R)
21	D266-Q-1	WIRE (WIRE Q TO PCB)	73	RLM-37A	PROTECTIVE SHEET
22	D273-2"	CONTROL JACKET	74	RLM-37N	SLITTER
23	D2A7	TORODIAL_RING	75	RLM-38N	SLITTER
24	D509040070400 E	SCREW	76	RLM-59L	SHIELD
25	EP-10-10A	FUSE	77	RLM-9L	MIDDLE GUIDE PLATE
26	FD-39	BUSH_SQUARE	78	RLM-B18-I	REAR PLATE
27	HP-10	CAP	79	RLM-B19-I	INNER COVER
28	HTC-9	LINER_ADAPTER	80	RLM-B1N	BRACKET (R)
29	HTC-10N	LINER_BOLT	81	RLM-B20-1	FRONT ROLLER SPROCKET (20T)
30	HTC-10N-1	BUSH	82	RLM-B20-2	REAR ROLLER SPROCKET (19T)
31	HTC-10N-2	SPACER	83	RLM-B20-3	MOTOR SPROCKET (20T)
32	HTC-8N-1	SPROCKET (17T)	84	RLM-B22	SIDE COVER (R)
33	P6KE30CA	VARISITOR	85	RLM-B22-1	SIDE COVER (L)
34	R13-220BA	MOTOR CONTROL SWITCH	86	RLM-B25	CU BUSH
35	RLM-5	DC MOTOR (DC 24 N1:75)	87	RLM-B29	THANSMIT PARTS
36	RLM-10	FEEDING PLATE	88	RLM-B2N	BRACKET (L)
37	RLM-12	FEEDING PLATE	89	RLM-B3-I	FEED TRAY
38	RLM-13	PAD	90	RLM-B4	FIXING PLATE FOR HEATER
39	RLM-14-1F+	LINER_ROLL	91	RLM-B42	SPRING (REAR)
40	RLM-21	FIXING PLATE	92	RLM-B42-1	SPRING (FRONT)
41	RLM-23	KNOB	93	RLM-B45	CHAIN
42	RLM-26	PANNEL RACK	94	RLM-B45-1	CHAIN
43	RLM-27-1-B	PCB	95	RLM-B6	PRESS PLATE
44	RLM-27-2-B	LED PCB	96	RLM-P1-1F	UPPER BRACKET (L)
45	RLM-27-3	CONNECT_WIRE	97	RLM-P1-2F	UPPER BRACKET (R)
46	RLM-32	HANDLE_TC_2700	98	RLM-P61-7	WHEEL
47	RLM-33	SIDE GUIDE (L)	99	RLM-P61-H	STAND
48	RLM-39	SPACER SUPPORT	100	RLM-P63-II	BAR
49	RLM-43-1	SPRING	101	RLM-W1	PAD
50	RLM-44	CORE GRIPPER	102	S3-D13-1	QUARTZ TUBE CAP
51	RLM-47-1	BLADE	103	SB-4	FOOT
52	RLM-48 黑色	POWER SWITCH	104	TB-10	PAD

A

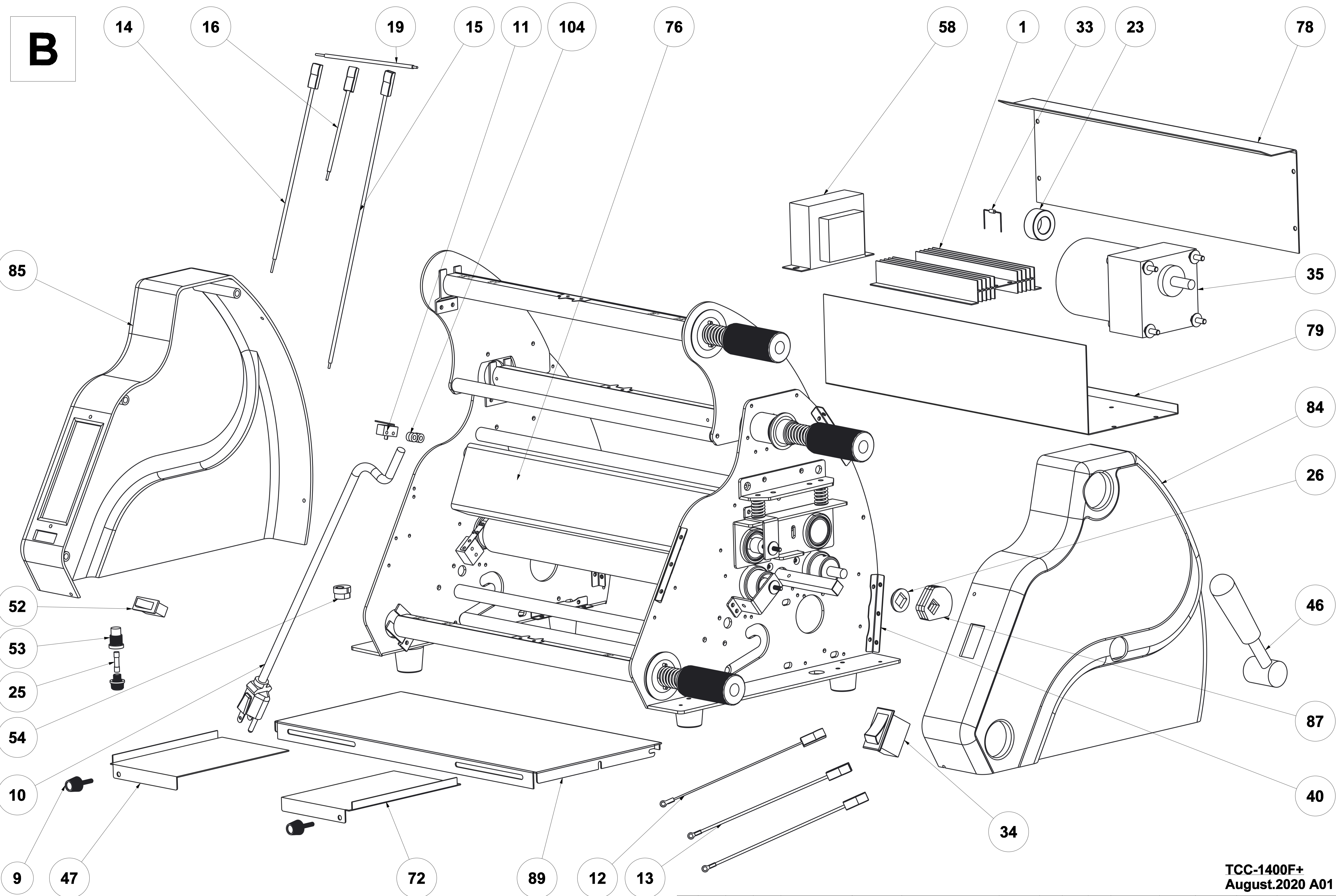


TCC-1400F+
August.2020 A01

21 86 8 70 6 7 102 2 5 17 18

TCC-1400F_1							單位	mm	一般公差	審核	日期	圖號	
							比例	0.650	.X:± 0.1 .XX:± 0.01 .XXX:± 0.001			機型	TCC-1400F+
							版本	A01	ANGLES:± 0.5	繪圖	日期	達新工業股份有限公司	
版本	修改者	審核	日期	修改內容	件號	名稱	材質	數量	表面處理	August. 2020		A1	

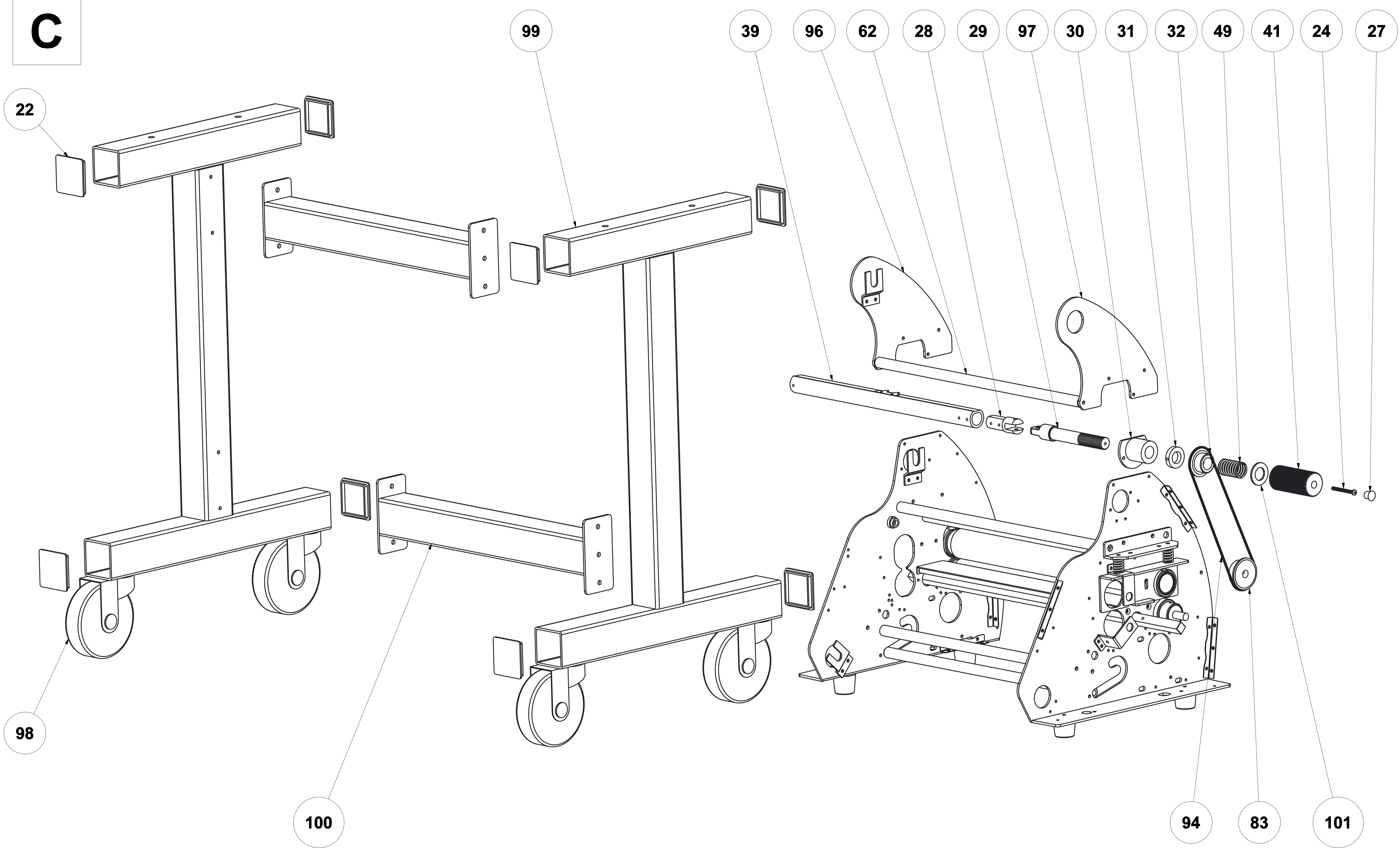
B



TCC-1400F+
August.2020 A01

單位	mm	一般公差	審核	日期	圖號	
比例	0.600	.X:± 0.1 .XX:± 0.01 .XXX:± 0.001 ANGLES:± 0.5			機型	TCC-1400F+
版本	A01		繪圖	日期	達新工業股份有限公司	
版本修改者	審核	日期	修改內容	件號	名稱	材質
						數量表面處理
						A1
						August. 2020

C



TCC-1400F+
August.2020 A01

							單位	mm	一般公差	審核	日期	圖號		
							TCC-1400F_1	比例	0.450	.X:± 0.1 .XX:± 0.01 .XXX:± 0.001			機型	TCC-1400F+
							版本	A01	ANGLES:± 0.5	繪圖	日期	達新工業股份有限公司		
版本	修改者	審核	日期	修改內容	件號	名稱	材質	數量	表面處理	A1	August. 2020			